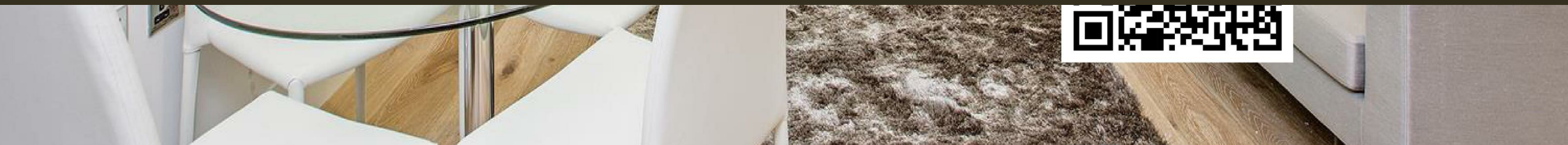




3 Riverlight Quay, Nine Elms
London SW11

GARTONJONES.COM



3 Riverlight Quay, Nine Elms London, SW11

GARTON JONES.COM

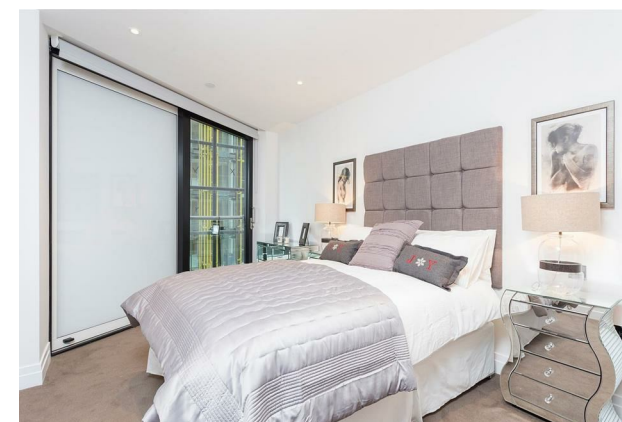
9 Albert
Embankment
London
SE1 7SP

Lettings:
+44 (0) 20 7735 1888
nineelms@gartonjones.com
www.gartonjones.com

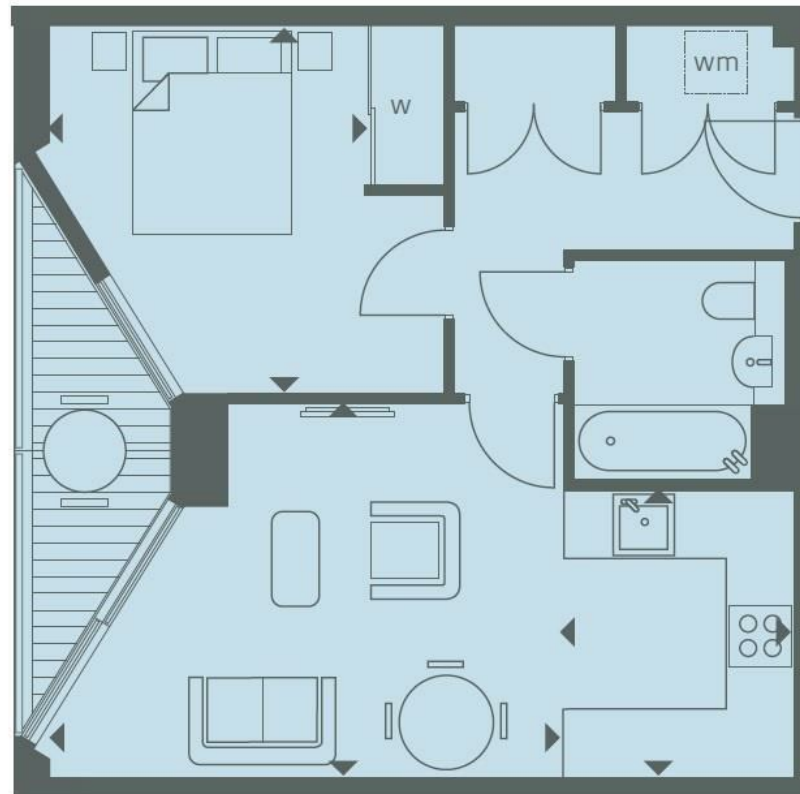
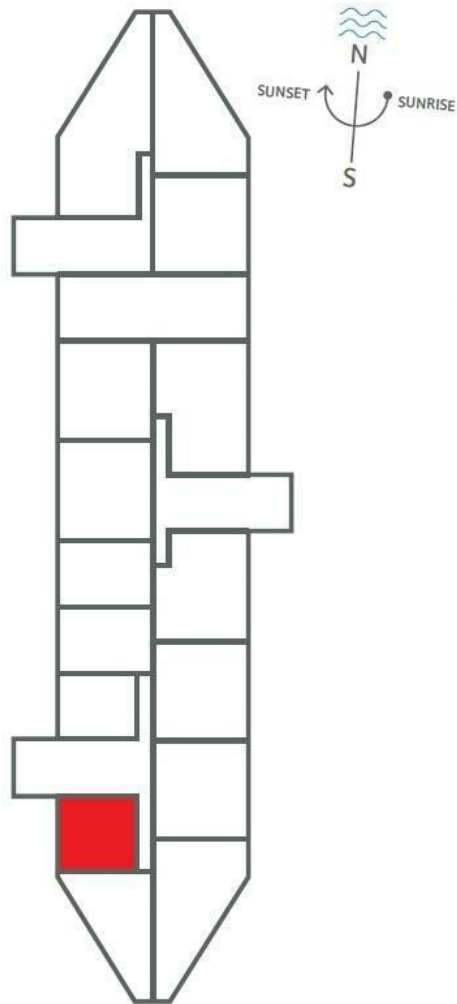
£550 Per Week

A fantastic 1 double bedroom apartment of approx. 502sq.ft (46.62sq.m.) in Riverlight Quay. The property benefits from a spacious open plan reception room with a smart integrated kitchen, floor to ceiling windows throughout offering plenty of natural light, a luxury bathroom suite and a large balcony overlooking communal gardens. Located on the banks of the River Thames close to Battersea Power Station, Riverlight is one of our most popular developments and offers residents the exclusive use of a health spa with a well-equipped “river view” gymnasium as well as a swimming pool, Jacuzzi, sauna, steam room and treatment room as well as a library / lounge, virtual golf & a cinema screening room. The onsite amenities include the Black Cab Coffee & the Nine Elms Tavern as well as being moments away from the vibrant restaurants and bars nearby at Embassy Gardens & Battersea Power Station. Riverlight is conveniently located a short walk from both the brand new Nine Elms Tube Station & Battersea Power Station Northern Line Extension providing easy access into Central London.

- 502sq.ft (46.62sq.m)
- 1 Bedroom
- West Facing Aspect
- Open Plan Reception with Smart Integrated Kitchen
- Balcony
- Furnished
- 24 Hour Concierge
- Residents Leisure Suite with Gymnasium and Swimming Pool
- Cinema Screening Room & Virtual Golf Suite
- Moments from Nine Elms & Battersea Power Station Tube Stations



River Thames



INTERNAL AREA M ² / SQ FT	46.62 / 502
EXTERNAL AREA M ² / SQ FT	4.84 / 52.1
Living / Dining	4.89m x 3.57m / 16'0" x 11'7"
Kitchen	2.75m x 2.21m / 9'0" x 7'3"
Bedroom 1	3.49m x 3.06m / 11'5" x 10'0"
Balcony	5.46m x 1.50m / 17'9" x 4'9"

